

**THOROUGHCLEAN**  
WATER BLASTERS

# DC HOT BOX

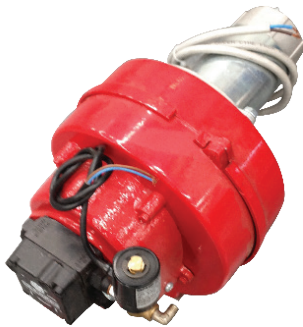
## STANDALONE BOILER

Diesel Fired - 12V DC - 4350 PSI - Hot **Hot Water**

**4350 PSI**  
Rated Pressure

**21 LPM**  
Rated Flow

12 V Blower  
Assembly



Heavy Duty - DIESEL - **Hot Water** - 4350 PSI, 21LPM

Heavy Duty Water Blasters - Portable, Skid, Trailer & Wash Bay Units



PH 1300 378 872  
WEB [www.trhc.com.au](http://www.trhc.com.au)  
EMAIL [sales@trhc.com.au](mailto:sales@trhc.com.au)

# 12V DC Heavy Duty, Diesel Fired ELECTRIC STANDALONE BOILER

A heavy duty high pressure boiler, specifically designed for use with our existing high pressure cleaner range (or other pressure cleaners). Popular with wash-bay users who want to degrease / sanitise with hot water, or anyone needing to add hot water capabilities to their pressure cleaner.

**RATED PSI** 4350 PSI

**FLOW/MINUTE** 21 LPM

**POWERED BY** 12V DC

**SIZE** 80 x 50 x 110 cm

**WEIGHT** ~150 kg

## BOILER / BURNER

- Heavy duty vertical diesel boiler with 1/2" mild steel coils, set to **70°C**.

## FUEL

- Diesel fuel supply is via a 21 litre stainless steel fuel tank with ball shut-off valve.
- Industrial size 296 diesel fuel filter.

## CONNECTIONS

- Supplied with stainless steel 3/8" fittings to attach to existing pressure cleaner with 2 x 3m connecting hose supplied.

**R2 thick wall 3/8" HP Hose:**

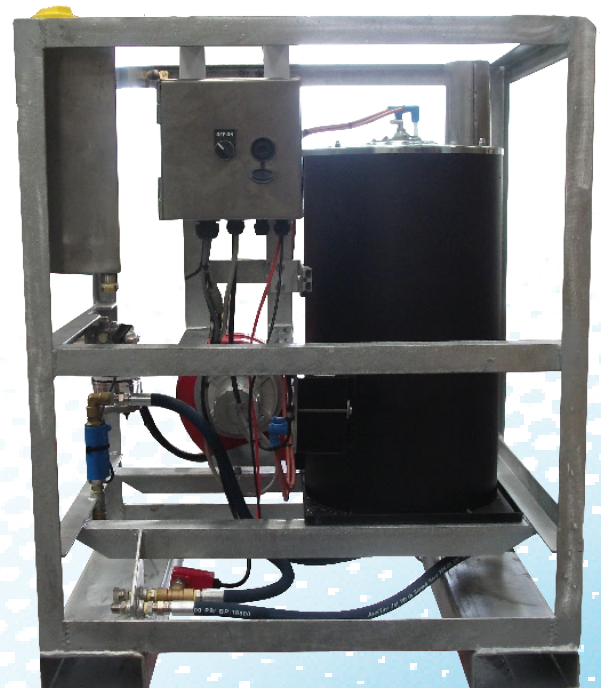
- Rated to 4550 PSI.
- Rated to 120degC
- 4x burst rating.

## PROTECTION FEATURES

- Low fuel level switch - cutting power to fuel solenoid, fan and electrodes.
- Pressure relief valve protecting boiler and operator.

## CONTROL BOX

- Weather-proof stainless steel control box with operator friendly controls and simple ON-OFF switch.
- Unit requires 18 Amp to run the fan motor, igniters and fuel pump. Power can be from engine spare charging capacity or from other power source.



## ANALYSIS - DESIGN - CONSTRUCTION - ACCESSORIES

**DISCLAIMER** All images are a representation only and are not to scale. Although care has been taken to ensure the accuracy, completeness and reliability of the information provided, due to ongoing product development and improvements, products may vary from this data sheet. The user of the information agrees that the information is subject to change without notice.

\*\*Derating (or de-rating or de-tuning) is the operation of a machine at less than its rated maximum power in order to prolong its life. The term is commonly applied to [electrical](#) and [electronic devices](#) and to [internal combustion engines](#)